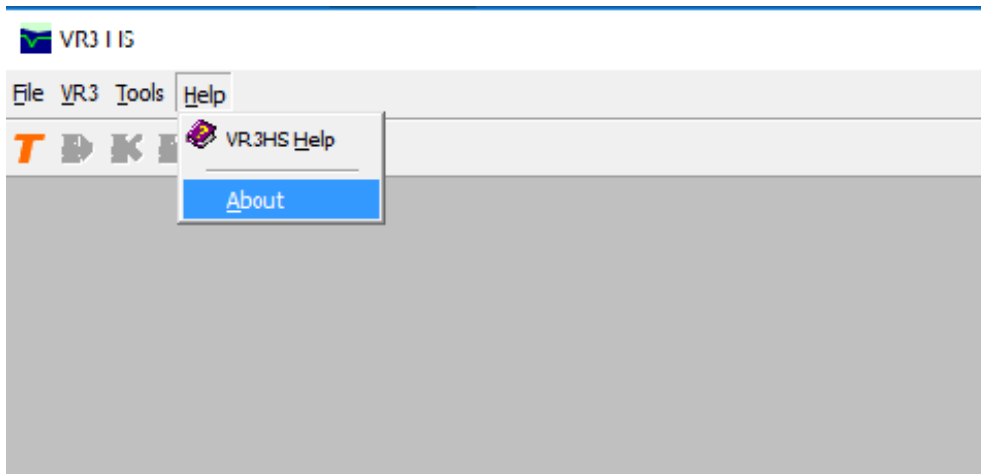


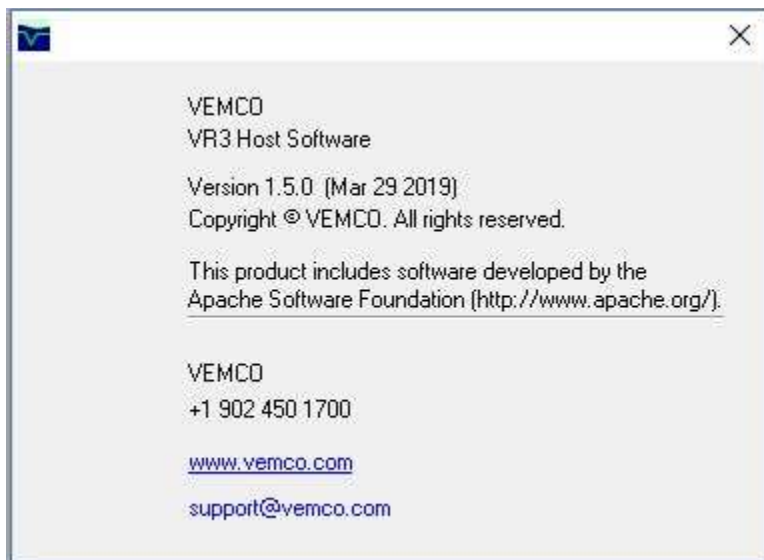
Follow this process to update your VR3-UWM receiver with a new code map.

Note that this process will erase all data stored in your receiver. Ensure that you offload your receiver data prior to following these instructions.

1. Download the latest VR3-UWM Host Software from the [Downloads](#) page of our website. **To update to 69 kHz receiver MAP-114 or MAP-115, you must use VR3HS version 1.5.0 or later and your receiver’s firmware must be up-to-date** (see Step 6).
2. Ensure you are in **ADMINISTRATION MODE** which is required to modify a map. Here are the steps for accessing ADMINISTRATION MODE in the VR3-UWM Host Software:
 - Open the VR3-UWM Host Software. Select “About” under the Help tab.



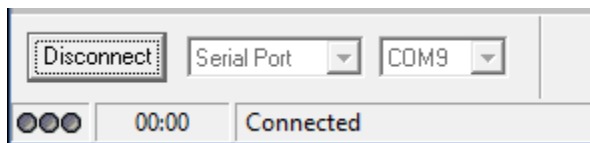
- You will see this pop up “About” VEMCO window.



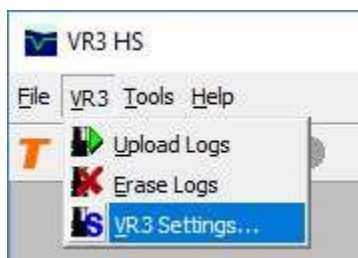
- To place in ADMINISTRATION MODE, use the following keystrokes: **CTRL + SHIFT + A +D**. ADMINISTRATION MODE will appear across the top of the “About” window.



- Communicate with the VR3-UWM receiver. **Reminder:** Choose the Low Power mode if you are communicating using the surface modem in air otherwise you may damage the receiver modem.

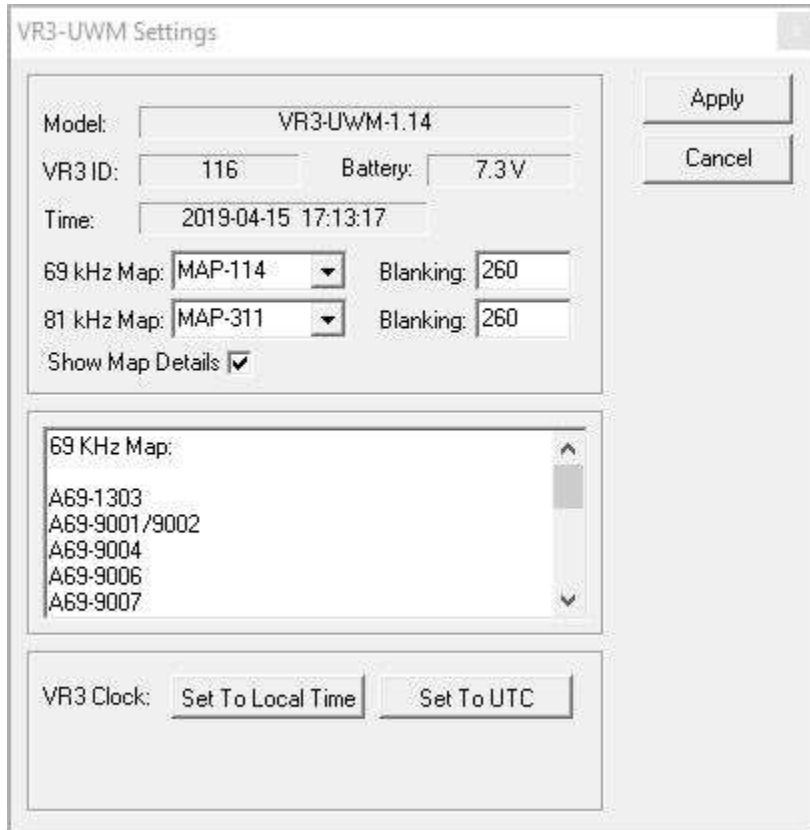


- Under the VR3 Menu, select “VR3 Settings”.

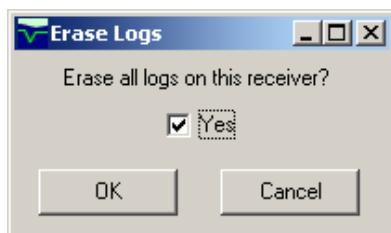


- Click the box next to “Show Map Details” (see next page) and the information identifying which map is currently loaded in the VR3 will appear in a section of the window.

6. Ensure that your VR3 has the latest firmware (v1.14) installed. The firmware version is shown after the “VR3-UWM” text in the “Model” field in the *VR3-UWM Settings* window shown below.
7. Choose MAP-114 or MAP-115 in the 69 kHz Map drop-down list. If you are unsure which receiver map to use, please refer to the [Receiver Code Maps for VEMCO 69 kHz Receivers](#) page on the VEMCO website.



8. Click the “Apply” button in the *VR3-UWM Settings* window.
9. Click the “Yes” box in the center of the *Erase Logs* window so a check mark appears. Then click “OK” to erase the log and to apply the changes to the settings. If the log is not erased, then the changes to the settings will not take effect.



After the log is erased, the *VR3 Settings Upload* window reports “Storing VR3 settings” and the approximate time remaining in the process. When the *VR3 Settings Upload* window closes, the new code map is active in the VR3-UWM receiver.

