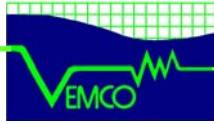


How to Update Firmware in VR2W Receivers

IMPORTANT!

PRE FIRMWARE UPDATE CHECKLIST:

- Install the latest version of VUE (V1.6 or greater) on all PCs, laptops and field laptops prior to updating your VR2Ws with firmware version 2.0 (or greater). VUE 1.6 (or greater) is the only version of VUE that will work with all VR2W and VR2 receivers regardless of firmware version. For additional information please read the [VR2W Customer Advisory](#).
- Ensure you download all data from your VR2Ws before installing new firmware. The process of updating your firmware will erase the data on the VR2W.
- If your VR2W battery is due for replacement, replace prior to updating your firmware.
- Update your VR2Ws with new firmware at your convenience as you retrieve them from the field. We suggest you target to have your receivers updated by the end of 2009.



Overview

Firmware refers to the internal software that operates a VR2W receiver. It is not to be confused with VUE, the PC software used to communicate with the receiver.

Firmware updates are rare and will occur to either deal with a hardware change or occasionally for a significant addition to functionality.

Version 2.0 of the VR2W firmware was developed to add support for new types of tag coding. The new tags will provide more unique IDs for sensor and non-sensor tags. For more information on our new tags, please see our [March 2009 newsletter](#).

Connect to the VR2W Receiver using VUE

Prior to connecting to your VR2W receiver, please download and install the latest version of the VUE Software Version 1.6 (which contains the newest VR2W firmware upgrade).



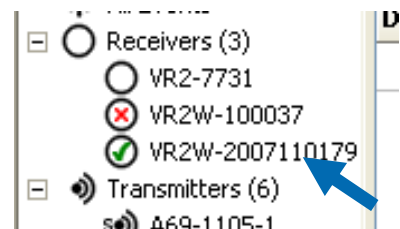
Remove your VR2W from the water and place it within 10 meters of the PC. Insert the VR2W Communication Key (VR2W Comm Key) in the large hole in the VR2W.

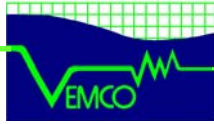
NOTE: It's important to leave the Communications Key inside the receiver during the firmware installation.

Do not move or disturb your PC during the firmware installation. Do not disturb or move the receiver or the VR2W Comm Key.

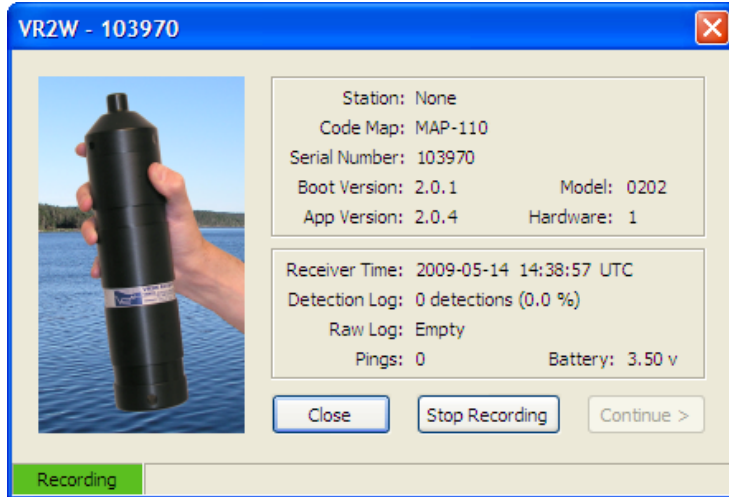
Only connect to one (1) receiver at a time for firmware updates.

The receiver name will appear in the receiver selection tree in the top left section of the VUE window once it has been detected by VUE. There will be a green checkmark next to the receiver name once detection has occurred which may take from tens of seconds up to a few minutes, Double click on the desired receiver name. This action will open the Receiver Controller Window and list the status of your VR2W.

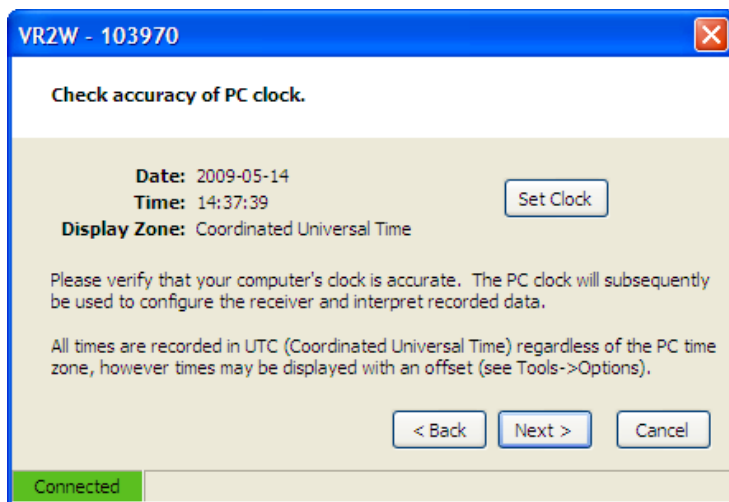




Update Your VR2W Firmware

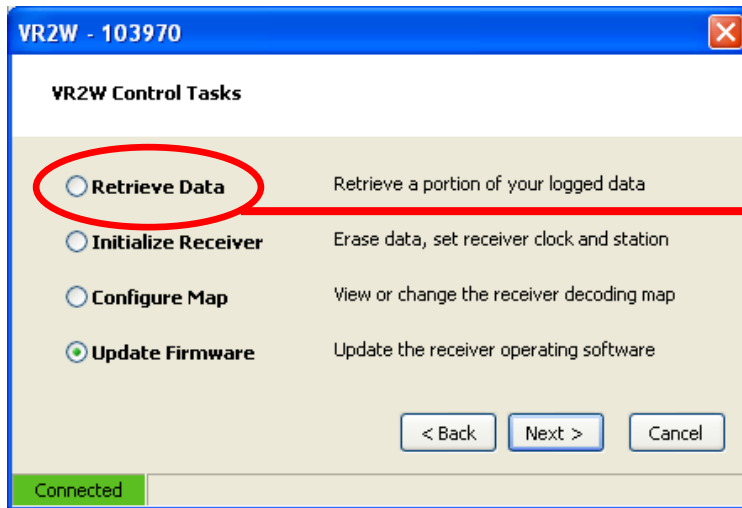
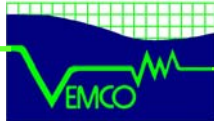


When the Receiver Controller Window opens, the bottom left corner reports "Recording". Select **Stop Recording** then select **Continue** to advance to the next window.



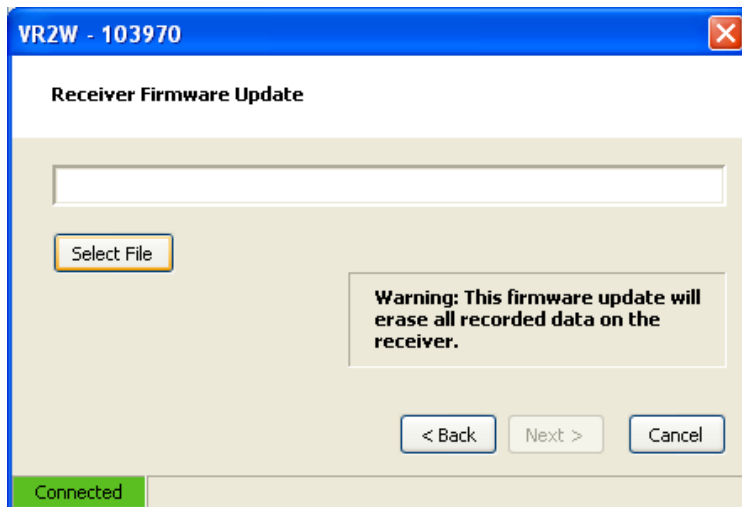
Verify that your PC clock is set correctly. It is important to always ensure your PC is set correctly before communicating with your receiver.

Select **Next** for a selection of VR2W Control Tasks.

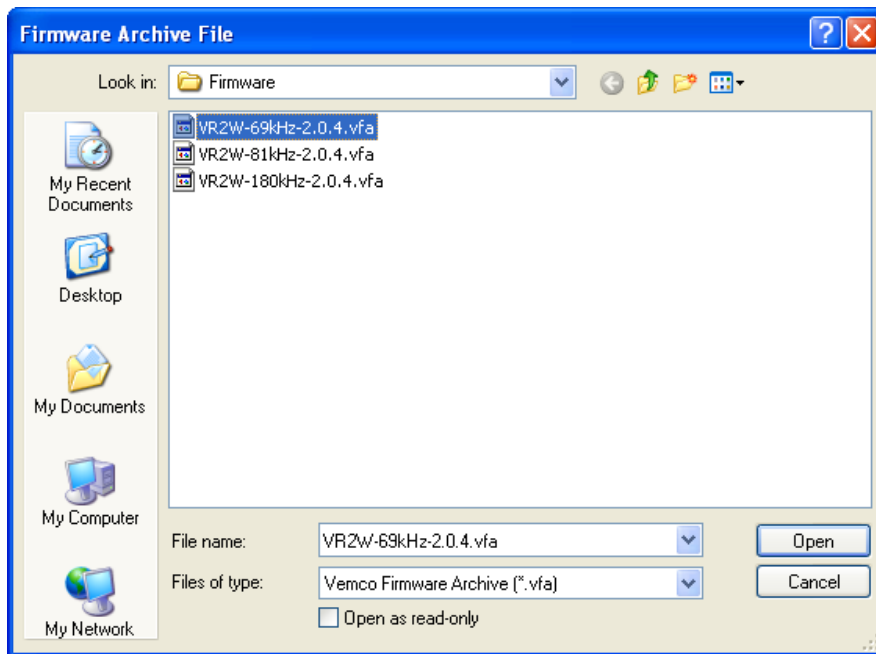
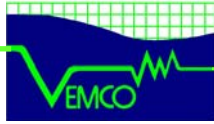


Select **Update Firmware** and proceed to the next window.

CAUTION: Ensure you retrieve your data BEFORE you update your firmware.



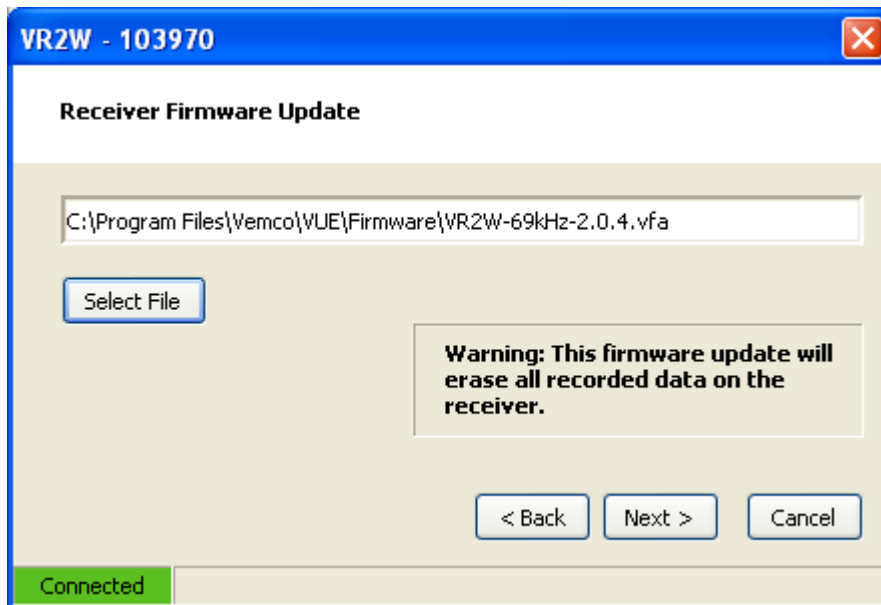
Choose **Select File** to see a selection of firmware files.



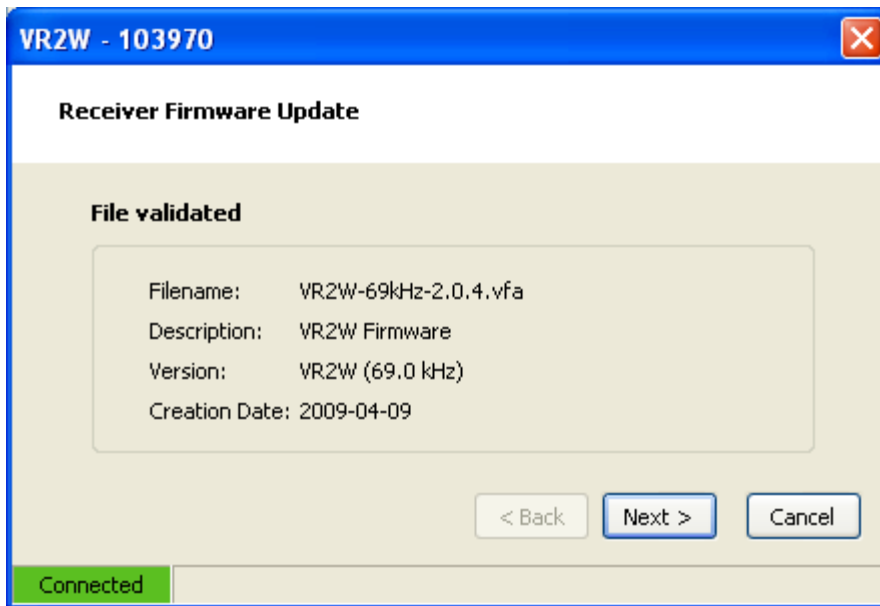
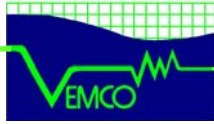
The correct file depends on the model of your VR2W receiver. The majority of VR2Ws are 69kHz.

Highlight the appropriate file and select **Open**.

NOTE: VUE will not let you install an incorrect firmware file.

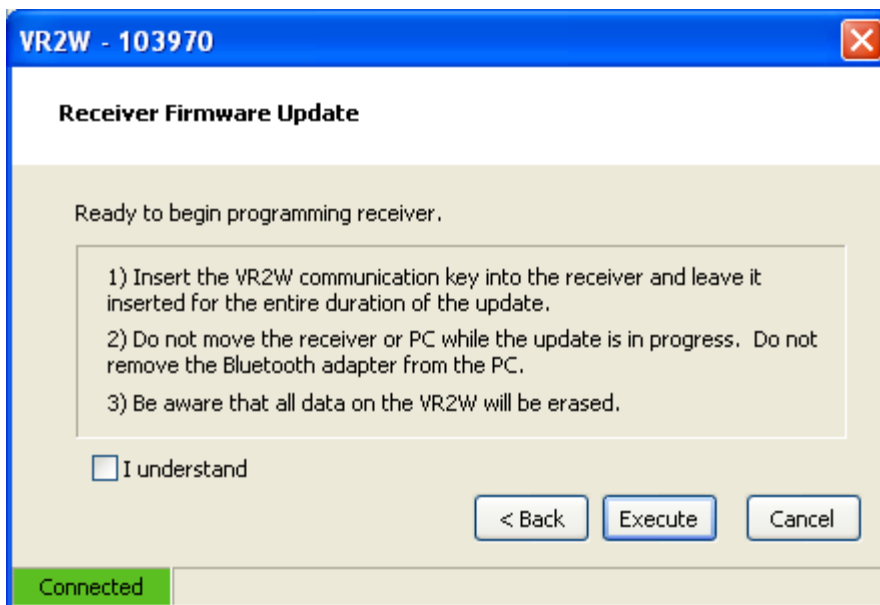


Select **Next** to continue.



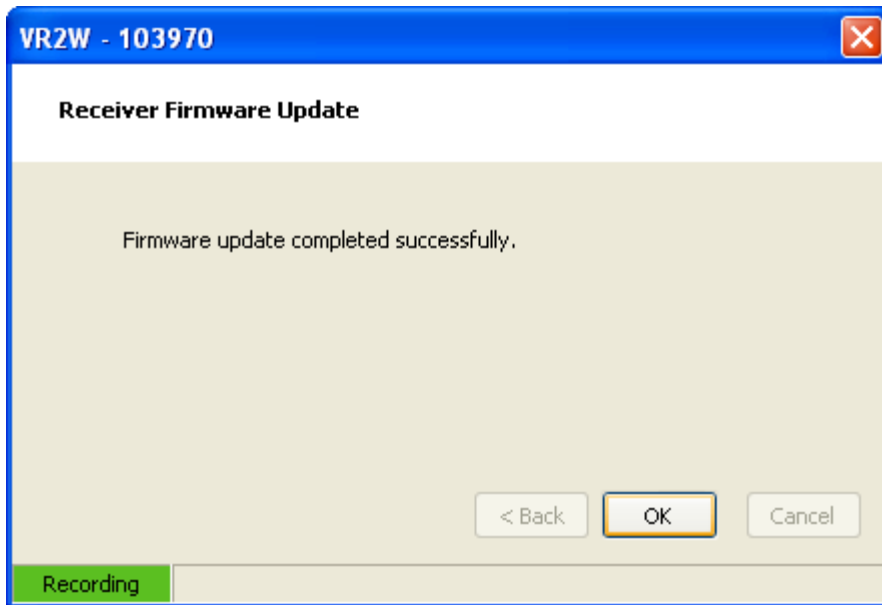
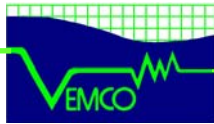
VUE will validate that you have chosen the appropriate firmware file.

Select **Next** to continue.



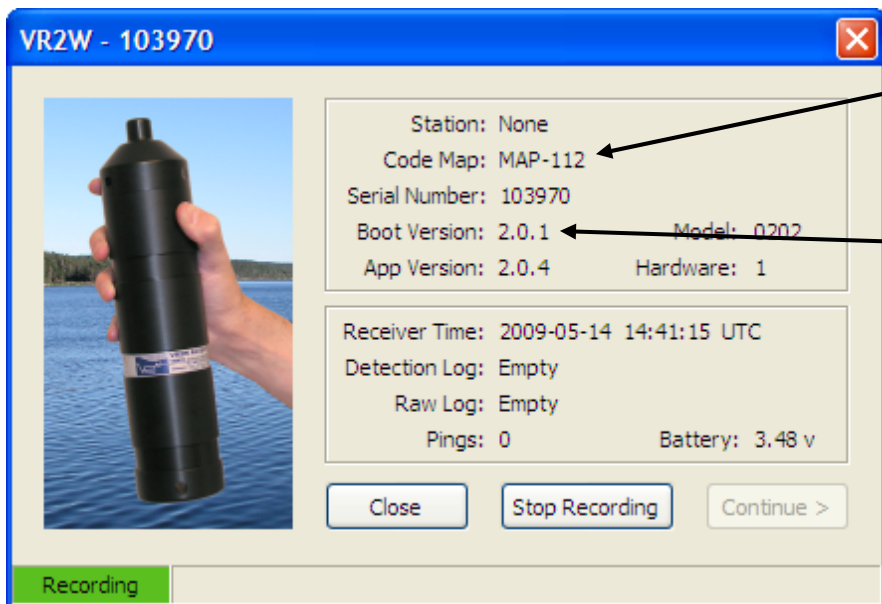
Select **I understand** once you have read and understood instructions.

Select **Execute** to complete the firmware installation. Installation will take several minutes to complete.



Do not proceed until you see this window indicating that the firmware update is complete.

Select **OK**.



The Reader Configuration Window will appear and the Code Map should be MAP-112.

Boot Version should be 2.0.1 or greater.

Your receiver is **now ready to be initialized** and deployed as usual.